

# Perkins & Career Readiness Assessment Options

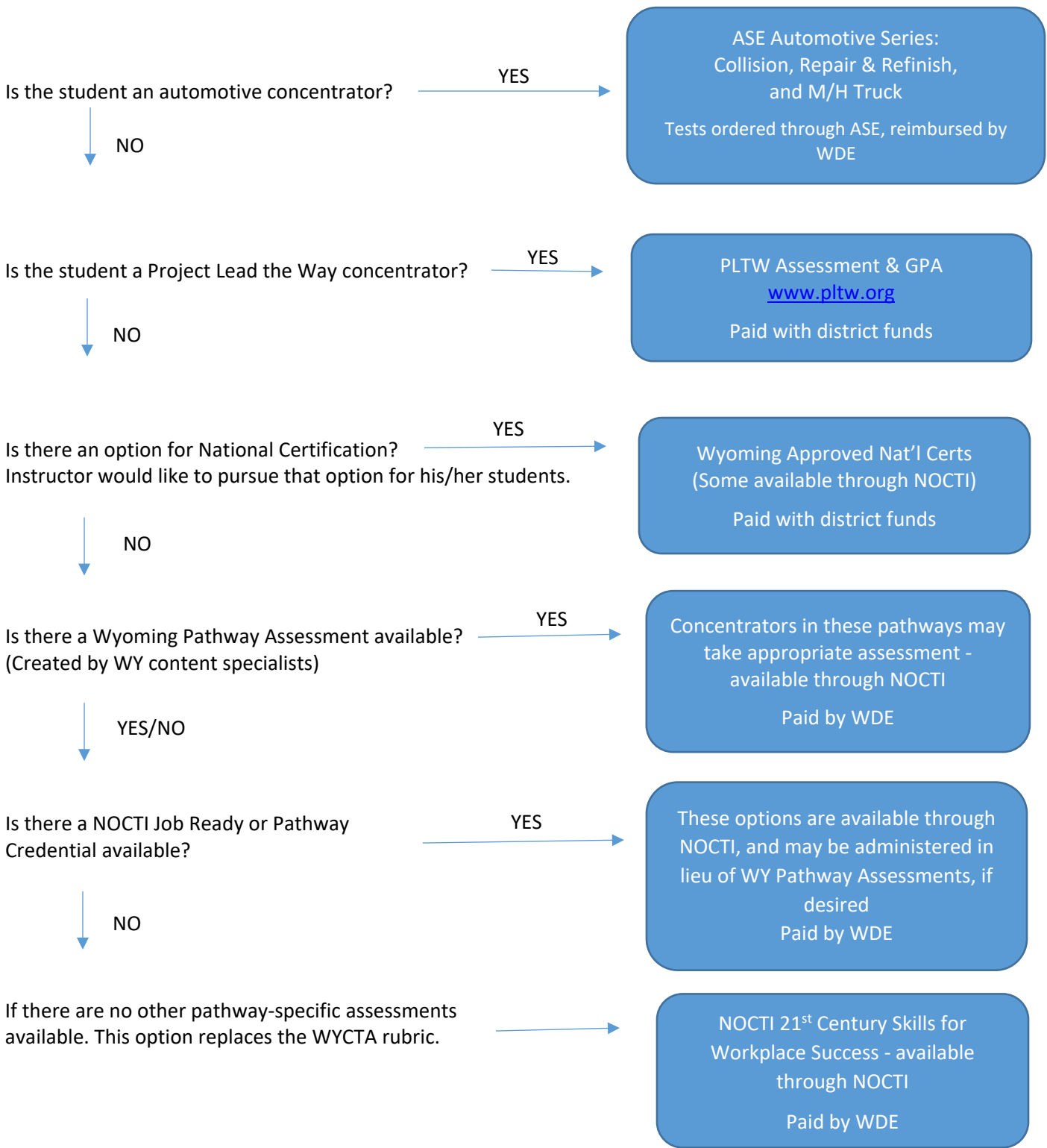
---

Wyoming Department of Education



*Note: This list is not exhaustive – it includes only those assessments that can be administered and reported for Perkins and State of Wyoming Accountability purposes (Post-Secondary Readiness). If you have a questions about any of the assessments on this list, please email Randall Butt at [randall.butt@wyo.gov](mailto:randall.butt@wyo.gov).*

### At-A-Glance Flowchart



*Note: This list is not exhaustive – it includes only those assessments that can be administered and reported for Perkins and State of Wyoming Accountability purposes (Post-Secondary Readiness). If you have a questions about any of the assessments on this list, please email Randall Butt at [randall.butt@wyo.gov](mailto:randall.butt@wyo.gov).*

### **Automotive**

- If a student is a concentrator in *any* automotive program, he or she **must** take the ASE to be eligible for reimbursement.
- Automotive instructors can choose to administer the ASE test title(s) in the test series that is most relevant to their programs.
- ASE order forms, user manuals and other resources may be accessed at: <http://www.asestudentcertification.com/>
- Cost of assessments are: \$30.00 per student, per test series, per academic year. There are two testing windows for ASE – fall and spring. Students can take multiple tests as well as pretests in the same series during both windows for the flat rate of \$30.00. For example, an instructor could administer the ASE Automobile Series Engine Repair test to the same student once (pre-test) in the fall and again in the spring. He/She could also administer any other test in the Automobile Series to the same student for no add'l cost.
- Reimbursement for ASE assessments will be processed through the Grants Management System (GMS). Contact Randall Butt at [randall.butt@wyo.gov](mailto:randall.butt@wyo.gov) for more information on reimbursement or go to this [link](https://edu.wyoming.gov/in-the-classroom/career-tech-ed/cte-resources/) on web page: <https://edu.wyoming.gov/in-the-classroom/career-tech-ed/cte-resources/>

### **Project Lead the Way**

- If a student is participating in PLTW, their PLTW GPA and assessment results may be reported. (Engineering, Biomedical Science and Computer Science)
- For more information on PLTW, please visit: <https://www.pltw.org/>

### **Business/Industry Certifications**

- If an instructor wishes to administer an assessment for certification in lieu of any of the Wyoming Pathway Assessments or NOCTI Job Ready/Pathway Assessments, he/she may do so.
- The only certifications in this category that are paid for by the WDE are the ASE assessments. The school district and/or individual tester will be responsible for all costs/fees associated with ALL certification assessments, including those available through NOCTI. Local Perkins funds may also be used to pay for individual student certifications if included in annual Perkins budget.
- The certifications that have been approved by the WDE to include as technical skills assessments are listed below. If there is an assessment the instructor would like to administer that is not included on this list, please notify Lauren Easom at [lauren.easom@wyo.gov](mailto:lauren.easom@wyo.gov).
- For more information about NOCTI Certification assessments: <http://nocti.org/CertificatePartnerPrograms.cfm>

### **NOCTI Platform Assessment Options:**

- An instructor may choose to administer Wyoming pathway assessments, NOCTI Job Ready or NOCTI Pathway assessment that best aligns with his/her program. The cost for these assessments is covered by the WDE.



*Note: This list is not exhaustive – it includes only those assessments that can be administered and reported for Perkins and State of Wyoming Accountability purposes (Post-Secondary Readiness). If you have a questions about any of the assessments on this list, please email Randall Butt at [randall.butt@wyo.gov](mailto:randall.butt@wyo.gov).*

- NOCTI Platform Assessments accessible via the NOCTI Assessment Platform at [www.nocti.org](http://www.nocti.org). Contact your NOCTI Site Coordinator for more information. If you do not have a Site Coordinator, contact Randall Butt at [randall.butt@wyo.gov](mailto:randall.butt@wyo.gov) or Lauren Easom at [lauren.easom@wyo.gov](mailto:lauren.easom@wyo.gov).
- The Wyoming Pathway, NOCTI Job Ready and NOCTI Pathway assessment are available for pre- and post-testing. Pre-tests should be administered prior to September 15<sup>th</sup> for fall post-testers and January 31<sup>st</sup> for spring post-testers.

## **WY Pathway Assessments**

- These assessments were developed by Wyoming content specialists respective to each pathway.
- An instructor may choose to administer a Wyoming pathway assessment, NOCTI Job Ready or NOCTI Pathway assessment that best aligns with his/her program. The cost of these assessments are covered by the WDE.

## **NOCTI Job Ready Credentials**

- These assessments target technical skills at the occupational level (e.g. Accounting, Carpentry, Pre-Engineering) of those who complete a secondary or post-secondary technical program. They measure aspects of occupational competence such as factual and theoretical knowledge and consist of both multiple choice and performance components. In Wyoming, only the multiple choice components will be available for administration at this time.
- Nail Specialty & Technical Theater were customized for New York, but are available to all NOCTI customers for administration. So, these two assessments DO NOT qualify as NOCTI credentials but are available for administration if they align with a particular program.

## **NOCTI Pathway Credentials**

- Broader in scope than NOCTI's Job Ready credentials, Pathway assessments measure the technical skills within a pathway or cluster as well as soft skills and academic skills contextualized to the occupation.

## **NOCTI 21<sup>st</sup> Century Skills for Workplace Success**

- This assessment should be administered only when no other pathway-specific assessment is available.
- This assessment covers the following areas: reading skills, math skills, writing skills, speaking and listening skills, computer literacy, reasoning, problem solving & decision-making, understanding "big picture," work ethic, positive attitude, independence and initiative, self-presentation, attendance and teamwork.



*Note: This list is not exhaustive – it includes only those assessments that can be administered and reported for Perkins and State of Wyoming Accountability purposes (Post-Secondary Readiness). If you have a questions about any of the assessments on this list, please email Randall Butt at [randall.butt@wyo.gov](mailto:randall.butt@wyo.gov).*

## Agriculture, Food & Natural Resources

*This Career Cluster focused on the production, processing, marketing, distribution, financing, and development of agricultural commodities and resources including food, fiber, wood products, natural resources, horticulture, and other plant and animal products/resources.*

<b>Agribusiness Systems</b>			
<i>Pathway Assessment Options</i>	<b>Wyoming Developed Assessments</b>	<b>Business &amp; Industry Certifications</b>	<b>NOCTI</b>
	<b>NEW PILOT ASSESSMENTS (Spring 2018)</b> <ul style="list-style-type: none"> <li>Agricultural General</li> <li>Agricultural Mechanics</li> <li>Manufacturing Welding</li> </ul>	<b>NOCTI Business &amp; Industry Cert.</b> <ul style="list-style-type: none"> <li>Virtual Enterprises</li> </ul> <b>CEV Certifications</b> <b>CASE Certification</b>	<b>Job Ready Assessments</b> <ul style="list-style-type: none"> <li>Production Agriculture</li> <li>Retail Commercial Baking</li> </ul>
<b>Animal Systems</b>			
<i>Pathway Assessment Options</i>	<b>Wyoming Developed Assessments</b>	<b>Business &amp; Industry Certifications</b>	<b>NOCTI</b>
	<b>NEW PILOT ASSESSMENTS (Spring 2018)</b> <ul style="list-style-type: none"> <li>Agricultural General</li> <li>Agricultural Mechanics</li> <li>Manufacturing Welding</li> </ul>	<ul style="list-style-type: none"> <li>AWS</li> <li>Hazardous Occupations Safety Training in Agriculture (HOSTA) Certification</li> </ul> <b>CEV Certifications</b> <b>CASE Certification</b>	<b>Job Ready Assessments</b> <ul style="list-style-type: none"> <li>Production Agriculture</li> <li>Small Animal Science &amp; Technology</li> <li>Welding</li> </ul> <b>Pathway Assessments</b> <ul style="list-style-type: none"> <li>Agricultural Biotechnology</li> <li>Animal Systems</li> </ul>
<b>Environmental Service Systems</b>			
<i>Pathway Assessment Options</i>	<b>Wyoming Developed Assessments</b>	<b>Business &amp; Industry Certifications</b>	<b>NOCTI</b>
	<b>NEW PILOT ASSESSMENTS (Spring 2018)</b> <ul style="list-style-type: none"> <li>Agricultural General</li> </ul>	<ul style="list-style-type: none"> <li>Hazardous Occupations Safety Training in Agriculture (HOSTA) Certification</li> <li>National Radon Safety Board (NRSB) Certification</li> <li>Wyoming Pesticide Applicator Certification</li> </ul>	<b>Job Ready Assessment</b> <ul style="list-style-type: none"> <li>Production Agriculture</li> <li>21<sup>st</sup> Century Skills Assessment</li> </ul>

		<b>NOCTI Business &amp; Industry Cert.</b> <ul style="list-style-type: none"> <li>Green Education Foundation Institute (GEFI) Sustainability 101</li> </ul> <b>CEV Certifications</b> <b>CASE Certification</b>	
<b>Food Products &amp; Processing Systems</b>			
<i>Pathway Assessment Options</i>	<b>Wyoming Developed Assessments</b>	<b>Business &amp; Industry Certifications</b>	<b>NOCTI</b>
	<b>NEW PILOT ASSESSMENTS (Spring 2018)</b> <ul style="list-style-type: none"> <li>Agriculture General</li> <li>Agriculture Mechanics</li> </ul>	<ul style="list-style-type: none"> <li>ServSafe Food Protection Manager</li> <li>ServSafe Food Handler</li> </ul>	<b>Job Ready Assessment</b> <ul style="list-style-type: none"> <li>Production Agriculture</li> </ul>
<i>Pathway Assessment Options</i>	<b>Wyoming Developed Assessments</b>	<b>Business &amp; Industry Certifications</b>	<b>NOCTI</b>
	<b>NEW PILOT ASSESSMENTS (Spring 2018)</b> <ul style="list-style-type: none"> <li>Agriculture General</li> <li>Agriculture Mechanics</li> <li>Manufacturing Welding</li> </ul>	<ul style="list-style-type: none"> <li>Hazardous Occupations Safety Training in Agriculture (HOSTA) Certificate</li> <li>OSHA 10 Hour Certification</li> <li>Wyoming Pesticide Applicator Certification</li> </ul> <b>NOCTI Business &amp; Industry Cert.</b> <ul style="list-style-type: none"> <li>Green Education Foundation Institute (GEFI) Sustainability 101</li> </ul> <b>CEV Certifications</b> <b>CASE Certification</b>	<b>Job Ready Assessment</b> <ul style="list-style-type: none"> <li>Production Agriculture</li> </ul> <b>Pathway Assessment</b> <ul style="list-style-type: none"> <li>Agricultural Biotechnology</li> <li>Natural Resource Systems</li> </ul>
<b>Plant Systems</b>			
<i>Pathway Assessment Options</i>	<b>Wyoming Developed Assessments</b>	<b>Business &amp; Industry Certifications</b>	<b>NOCTI</b>
	<b>NEW PILOT ASSESSMENTS (Spring 2018)</b> <ul style="list-style-type: none"> <li>Agriculture General</li> </ul>	<ul style="list-style-type: none"> <li>Hazardous Occupations Safety Training in Agriculture (HOSTA) Certificate</li> <li>OSHA 10 Hour Certification</li> <li>Wyoming Pesticide Applicator Certification</li> </ul> <b>NOCTI Business &amp; Industry Cert.</b>	<b>Job Ready Assessment</b> <ul style="list-style-type: none"> <li>Floriculture</li> <li>Floriculture – Greenhouse</li> <li>Forest Products and Processing</li> <li>Horticulture - Landscaping</li> <li>Production Agriculture</li> </ul>

		Green Education Foundation Institute (GEFI) Sustainability 101 <b>CEV Certifications</b> <b>CASE Certification</b>	<b>Pathway Assessment</b> <ul style="list-style-type: none"> <li>• Agricultural Biotechnology</li> <li>• Natural Resource Systems</li> </ul>
--	--	--	--

<b>Power, Structural &amp; Technical Systems</b>			
<i>Pathway Assessment Options</i>	<b>Wyoming Developed Assessments</b>	<b>Business &amp; Industry Certifications</b>	<b>NOCTI</b>
	<b>NEW PILOT ASSESSMENTS - (Spring 2018)</b> <ul style="list-style-type: none"> <li>• Agriculture General</li> <li>• Agricultural Mechanics – Wyoming</li> <li>• Architectural Drafting Wyoming</li> <li>• Cabinetmaking &amp; Woodworking</li> <li>• Manufacturing Welding</li> </ul>	<ul style="list-style-type: none"> <li>• AutoDesk Certification</li> <li>• AutoDesk Inventor</li> <li>• AutoDesk Revit Architecture</li> <li>• AWS</li> <li>• Hazardous Occupations Safety Training in Agriculture (HOSTA) Certificate</li> <li>• OSHA 10 Hour Certification</li> <li>• SolidWorks Certification</li> </ul> <b>ASE Automobile Series</b> <ul style="list-style-type: none"> <li>• Automatic Transmission/Transaxle</li> <li>• Automobile Service Technology</li> <li>• Brakes</li> <li>• Electrical/Electronic Systems</li> <li>• Engine Performance</li> <li>• Engine Repair</li> <li>• Heating &amp; Air Conditioning</li> <li>• Maintenance &amp; Light Repair</li> <li>• Manual Drive Train &amp; Axles</li> <li>• Suspension &amp; Steering</li> </ul> <b>ASE Collision, Repair &amp; Refinish Series</b> <ul style="list-style-type: none"> <li>• Mechanical &amp; Electrical</li> <li>• Non-structural Analysis &amp; Damage Repair</li> </ul>	<b>Job Ready Assessment</b> <ul style="list-style-type: none"> <li>• Agriculture Mechanics</li> <li>• Precision Machining</li> <li>• Welding</li> </ul> <b>Pathway Assessment</b> <ul style="list-style-type: none"> <li>• Design &amp; Pre-Construction</li> </ul>



*Note: This list is not exhaustive – it includes only those assessments that can be administered and reported for Perkins and State of Wyoming Accountability purposes (Post-Secondary Readiness). If you have a questions about any of the assessments on this list, please email Randall Butt at [randall.butt@wyo.gov](mailto:randall.butt@wyo.gov).*

		<ul style="list-style-type: none"> <li>• Painting &amp; Refinishing</li> <li>• Structural Analysis &amp; Damage Repair</li> </ul> <p>ASE M/H Truck Series</p> <ul style="list-style-type: none"> <li>• Brake (M/H Truck)</li> <li>• Diesel Engines</li> <li>• Electrical/Electronic Systems (M/H Truck)</li> <li>• Steering &amp; Suspension (M/H Truck)</li> </ul> <p><b>CEV Certifications</b> <b>CASE Certification</b></p>	
--	--	--	--



*Note: This list is not exhaustive – it includes only those assessments that can be administered and reported for Perkins and State of Wyoming Accountability purposes (Post-Secondary Readiness). If you have a questions about any of the assessments on this list, please email Randall Butt at [randall.butt@wyo.gov](mailto:randall.butt@wyo.gov).*



## Architecture & Construction

Careers in designing, planning, managing, building and maintaining the built environment.

Pathway Assessment Options	Construction		
	Wyoming Developed Assessments	Business & Industry Certifications	NOCTI
	<p><b>NEW PILOT ASSESSMENTS - (Spring 2018)</b></p> <ul style="list-style-type: none"> <li>Architectural Drafting-Wyoming</li> <li>Cabinetmaking &amp; Woodworking</li> <li>Commercial &amp; Residential Carpentry</li> <li>Manufacturing Welding</li> <li>Technical Drafting - Wyoming</li> </ul>	<ul style="list-style-type: none"> <li>AWS</li> <li>AutoDesk Certification</li> <li>Autodesk Inventor</li> <li>Autodesk Revit Architecture</li> <li>Construction Site Safety Technician (CSST) Certification</li> <li>Non-Structural Analysis/Damage Repair (NA3SA)</li> <li>OSHA 10 Hour Certification</li> <li>Painting/Refinishing (NA3SA)</li> <li>Plumbing-Heating-Cooling Contractors (PHEC) Educational Foundation</li> <li>SolidWorks Certification</li> <li>Woods POWR-Grip ISO 9001 Certification</li> </ul> <p><b>NOCTI Business &amp; Industry Cert.</b></p> <ul style="list-style-type: none"> <li>Green Education Foundation Institute (GEFI) Sustainability 101</li> </ul> <p>HBI/NAHB RCA Series Student Certification</p> <ul style="list-style-type: none"> <li>Basic Principles of Construction</li> <li>Building Construction Technology – Basic &amp; Advanced</li> <li>Carpentry – Basic &amp; Advanced</li> <li>House Wiring – Basic &amp; Advanced</li> </ul>	<p><b>Job Ready Assessment</b></p> <ul style="list-style-type: none"> <li>Architectural Drafting</li> <li>Building Construction Occupations</li> <li>Cabinetmaking</li> <li>CAD</li> <li>Carpentry</li> <li>Mechanical Drafting &amp; Design</li> <li>Construction Masonry-Brick</li> <li>Fundamentals of Construction</li> <li>Pre-Engineering/Engineering Technology</li> <li>Technical Drafting</li> <li>Welding</li> </ul> <p><b>Pathway Assessment</b></p> <ul style="list-style-type: none"> <li>Construction</li> <li>Design &amp; Pre-Construction</li> </ul>

		<ul style="list-style-type: none"> <li>• HVAC – Basic</li> <li>• HVAC Service Tech Advanced</li> <li>• Plumbing – Basic &amp; Advanced</li> </ul> <p>Home Builder’s Institute Pre-Apprentice Certificate Training (PACT)</p> <ul style="list-style-type: none"> <li>• Core Certification</li> <li>• Green Core Certification</li> <li>• Specialty: Building Construction</li> </ul>	
<b>Design/Pre-Construction</b>			
<i>Pathway Assessment Options</i>	<b>Wyoming Developed Assessments</b>	<b>Business &amp; Industry Certifications</b>	<b>NOCTI</b>
	<p><b>NEW PILOT ASSESSMENTS (Spring 2018)</b></p> <ul style="list-style-type: none"> <li>• Architectural Drafting-Wyoming</li> <li>• Cabinetmaking &amp; Woodworking</li> <li>• Commercial &amp; Residential Carpentry</li> <li>• Manufacturing Welding</li> <li>• Technical Drafting - Wyoming</li> </ul>	<ul style="list-style-type: none"> <li>• AWS</li> <li>• AutoDesk Certification</li> <li>• Autodesk Inventor</li> <li>• Autodesk Revit Architecture</li> <li>• Construction Site Safety Technician (CSST) Certification</li> <li>• Non-Structural Analysis/Damage Repair (NA3SA)</li> <li>• OSHA 10 Hour Certification</li> <li>• Painting/Refinishing (NA3SA)</li> <li>• Plumbing-Heating-Cooling Contractors (PHEC) Educational Foundation</li> <li>• SolidWorks Certification</li> <li>• Woods POWR-Grip ISO 9001 Certification</li> </ul> <p><b>NOCTI Business &amp; Industry Cert.</b></p> <ul style="list-style-type: none"> <li>• Green Education Foundation Institute (GEFI) Sustainability 101</li> </ul>	<p><b>Job Ready Assessment</b></p> <ul style="list-style-type: none"> <li>• Architectural Drafting</li> <li>• Building Construction Occupations</li> <li>• Cabinetmaking</li> <li>• CAD</li> <li>• Carpentry</li> <li>• Mechanical Drafting &amp; Design</li> <li>• Construction Masonry-Brick</li> <li>• Fundamentals of Construction</li> <li>• Interior Decorating &amp; Design</li> <li>• Pre-Engineering/Engineering Technology</li> <li>• Technical Drafting</li> <li>• Welding</li> </ul> <p><b>Pathway Assessment</b></p> <ul style="list-style-type: none"> <li>• Construction</li> <li>• Design &amp; Pre-Construction</li> </ul>



*Note: This list is not exhaustive – it includes only those assessments that can be administered and reported for Perkins and State of Wyoming Accountability purposes (Post-Secondary Readiness). If you have a questions about any of the assessments on this list, please email Randall Butt at [randall.butt@wyo.gov](mailto:randall.butt@wyo.gov).*

		<p>HBI/NAHB RCA Series Student Certification</p> <ul style="list-style-type: none"> <li>• Basic Principles of Construction</li> <li>• Building Construction Technology – Basic &amp; Advanced</li> <li>• Carpentry – Basic &amp; Advanced</li> <li>• House Wiring – Basic &amp; Advanced</li> <li>• HVAC – Basic</li> <li>• HVAC Service Tech Advanced</li> <li>• Plumbing – Basic &amp; Advanced</li> </ul> <p>Home Builder’s Institute Pre-Apprentice Certificate Training (PACT)</p> <ul style="list-style-type: none"> <li>• Core Certification</li> <li>• Green Core Certification</li> <li>• Specialty: Building Construction</li> </ul>	
<b>Maintenance/Operations</b>			
<i>Pathway Assessment Options</i>	<b>Wyoming Developed Assessments</b>	<b>Business &amp; Industry Certifications</b>	<b>NOCTI</b>
	<ul style="list-style-type: none"> <li>• NA</li> </ul>	<ul style="list-style-type: none"> <li>• AWS</li> <li>• Construction Site Safety Technician (CSST) Certification</li> <li>• H2S Certification (Hydrogen Sulfate)</li> <li>• Measurement while Drilling Engineer Certification</li> <li>• National Radon Safety Board (NRSB) Certification</li> <li>• Non-Structural Analysis/ Damage Repair (NA3SA)</li> <li>• 10 Hour OSHA Training</li> <li>• Woods POWR-Grip ISO 9001 Certification</li> </ul>	<p><b>Job Ready Assessment</b></p> <ul style="list-style-type: none"> <li>• Building Construction Occupations</li> <li>• Building Trades Maintenance</li> <li>• Electrical Construction Technology</li> <li>• Electrical Occupations</li> <li>• HVAC</li> <li>• HVAC/R</li> <li>• HVACR-Installation &amp; Start-Up</li> <li>• HVACR-Service &amp; Repair</li> </ul>



*Note: This list is not exhaustive – it includes only those assessments that can be administered and reported for Perkins and State of Wyoming Accountability purposes (Post-Secondary Readiness). If you have a questions about any of the assessments on this list, please email Randall Butt at [randall.butt@wyo.gov](mailto:randall.butt@wyo.gov).*

		<ul style="list-style-type: none"> <li>• Plumbing-Heating-Cooling Contractors (PHCC) Education Foundation</li> </ul> <p>ASE Automobile Series</p> <ul style="list-style-type: none"> <li>• Automatic Transmission/Transaxle</li> <li>• Automobile Service Technology</li> <li>• Brakes</li> <li>• Electrical/Electronic Systems</li> <li>• Engine Performance</li> <li>• Engine Repair</li> <li>• Heating &amp; Air Conditioning</li> <li>• Maintenance &amp; Light Repair</li> <li>• Manual Drive Train &amp; Axles</li> <li>• Suspension &amp; Steering</li> </ul> <p>ASE Collision, Repair &amp; Refinish Series</p> <ul style="list-style-type: none"> <li>• Mechanical &amp; Electrical</li> <li>• Non-structural Analysis &amp; Damage Repair</li> <li>• Painting &amp; Refinishing</li> <li>• Structural Analysis &amp; Damage Repair</li> </ul> <p>ASE M/H Truck Series</p> <ul style="list-style-type: none"> <li>• Brake (M/H Truck)</li> <li>• Diesel Engines</li> <li>• Electrical/Electronic Systems (M/H Truck)</li> <li>• Steering &amp; Suspension (M/H Truck)</li> </ul>	<ul style="list-style-type: none"> <li>• Industrial Maintenance Mechanics</li> <li>• Plumbing</li> <li>• Welding</li> <li>• Wind Turbine Maintenance Technician</li> </ul> <p><b>Pathway Assessment</b></p> <ul style="list-style-type: none"> <li>• Maintenance Operations</li> </ul>
--	--	---	--

## Arts, A/V Technology & Communications

*Designing, producing, exhibiting, performing, writing, and publishing multimedia content including visual and performing arts and design, journalism, and entertainment services.*

<b>Journalism &amp; Broadcasting</b>			
<i>Pathway Assessment Options</i>	<b>Wyoming Developed Assessments</b>	<b>Business &amp; Industry Certifications</b>	<b>NOCTI</b>
	<ul style="list-style-type: none"> <li>• NA</li> </ul>	<ul style="list-style-type: none"> <li>• TestOut PC Pro</li> </ul>	<b>Job Ready Assessment</b> <ul style="list-style-type: none"> <li>• Advertising &amp; Design</li> <li>• Audio-Visual Communications</li> <li>• Television Production</li> <li>• Visual Communication &amp; Multimedia Design</li> <li>• 21<sup>st</sup> Century Skills Assessment</li> </ul> <b>Pathway Assessment</b> <ul style="list-style-type: none"> <li>• Broadcasting &amp; Journalism</li> </ul>
<b>Performing Arts</b>			
<i>Pathway Assessment Options</i>	<b>Wyoming Developed Assessments</b>	<b>Business &amp; Industry Certifications</b>	<b>NOCTI</b>
	<ul style="list-style-type: none"> <li>• NA</li> </ul>	<ul style="list-style-type: none"> <li>• NA</li> </ul>	<b>Job Ready Assessment</b> <ul style="list-style-type: none"> <li>• Technical Theater</li> <li>• Television Production</li> <li>• Visual Communication &amp; Multimedia Design</li> <li>• 21<sup>st</sup> Century Skills Assessment</li> </ul> <b>Pathway Assessment</b> <ul style="list-style-type: none"> <li>• Performing Arts</li> </ul>
<b>Printing Technology</b>			
<i>Pathway Assessment Options</i>	<b>Wyoming Developed Assessments</b>	<b>Business &amp; Industry Certifications</b>	<b>NOCTI</b>
	<ul style="list-style-type: none"> <li>• <b>Business, Technology and Operations (2016 only)</b></li> </ul>		<b>Job Ready Assessment</b> <ul style="list-style-type: none"> <li>• Advertising &amp; Design</li> <li>• Graphic Production Technology</li> </ul>



*Note: This list is not exhaustive – it includes only those assessments that can be administered and reported for Perkins and State of Wyoming Accountability purposes (Post-Secondary Readiness). If you have a questions about any of the assessments on this list, please email Randall Butt at [randall.butt@wyo.gov](mailto:randall.butt@wyo.gov).*

			<ul style="list-style-type: none"> <li>Visual Communication &amp; Multimedia Design</li> <li>21<sup>st</sup> Century Skills Assessment</li> </ul>
<b>Telecommunications</b>			
<i>Pathway Assessment Options</i>	<b>Wyoming Developed Assessments</b>	<b>Business &amp; Industry Certifications</b>	<b>NOCTI</b>
	<ul style="list-style-type: none"> <li>NA</li> </ul>	<ul style="list-style-type: none"> <li>NA</li> </ul>	<b>Job Ready Assessment</b> <ul style="list-style-type: none"> <li>Graphic Production Technology</li> <li>Television Production</li> <li>Visual Communication &amp; Multimedia Design</li> <li>21<sup>st</sup> Century Skills Assessment</li> </ul> <b>Pathway Assessment</b> <ul style="list-style-type: none"> <li>Broadcasting and Journalism</li> </ul>
<b>Visual Arts</b>			
<i>Pathway Assessment Options</i>	<b>Wyoming Developed Assessments</b>	<b>Business &amp; Industry Certifications</b>	<b>NOCTI</b>
	<ul style="list-style-type: none"> <li>Marketing, Management &amp; Entrepreneurship - <b>NEW PILOT ASSESSMENTS (Spring 2018)</b></li> <li><b>Textiles (2016 only)</b></li> </ul>	<ul style="list-style-type: none"> <li>TestOut PC Pro</li> </ul>	<b>Job Ready Assessment</b> <ul style="list-style-type: none"> <li>Advertising &amp; Design</li> <li>Audio-Visual Communications</li> <li>Graphic Production Technology</li> <li>Technical Theater</li> <li>Visual Communication &amp; Multimedia Design</li> <li>Web Design</li> </ul> <b>Pathway Assessment</b> <ul style="list-style-type: none"> <li>Broadcasting &amp; Journalism</li> <li>Visual Arts</li> </ul>

## Business Management & Administration

Careers in planning, organizing, directing and evaluating business functions essential to efficient and productive business operations.

	Administrative Support		
Pathway Assessment Options	Wyoming Developed Assessments	Business & Industry Certifications	NOCTI
	<ul style="list-style-type: none"> <li>Business, Technology &amp; Operations (2016 only)</li> </ul>	<ul style="list-style-type: none"> <li>TestOut Desktop Pro Certification</li> <li>TestOut Network Pro Certification</li> <li>TestOut PC Pro</li> <li>Microsoft Office Specialist (MOS) Certification</li> <li>Certiport Quickbooks Certification</li> <li>Administrative Assistant Certification</li> </ul>	<p><b>Job Ready Assessment</b></p> <ul style="list-style-type: none"> <li>Accounting Basic</li> <li>Accounting Advanced</li> <li>Administrative Assisting</li> <li>Adverting &amp; Design</li> <li>21<sup>st</sup> Century Skills Assessment</li> </ul> <p><b>Pathway Assessment</b></p> <ul style="list-style-type: none"> <li>Administrative Services</li> </ul>
	Business Information Management		
Pathway Assessment Options	Wyoming Developed Assessments	Business & Industry Certifications	NOCTI
	<ul style="list-style-type: none"> <li>Marketing, Management &amp; Entrepreneurship - <b>NEW PILOT ASSESSMENTS (Spring 2018)</b></li> <li>Accounting (2016 only)</li> <li>Business, Technology &amp; Operations (2016 only)</li> <li>Finance (2016 only)</li> </ul>	<ul style="list-style-type: none"> <li>Microsoft Office Specialist (MOS) Certification</li> <li>TestOut Desktop Pro Certification</li> <li>TestOut Network Pro Certification</li> <li>TestOut PC Pro</li> </ul> <p><b>NOCTI Business &amp; Industry Cert.</b></p> <ul style="list-style-type: none"> <li>Virtual Enterprises</li> </ul>	<p><b>Job Ready Assessment</b></p> <ul style="list-style-type: none"> <li>Administrative Assisting</li> <li>Business Information Processing</li> </ul> <p><b>Pathway Assessment</b></p> <ul style="list-style-type: none"> <li>Administrative Services</li> </ul>
	General Management		
Pathway Assessment Options	Wyoming Developed Assessments	Business & Industry Certifications	NOCTI
	<ul style="list-style-type: none"> <li>Marketing, Management &amp; Entrepreneurship - <b>NEW PILOT ASSESSMENTS (Spring 2018)</b></li> </ul>	<p><b>NOCTI Business &amp; Industry Cert.</b></p> <ul style="list-style-type: none"> <li>ASK Business Certification</li> </ul>	<p><b>Job Ready Assessment</b></p> <ul style="list-style-type: none"> <li>Administrative Assisting</li> </ul>



Note: This list is not exhaustive – it includes only those assessments that can be administered and reported for Perkins and State of Wyoming Accountability purposes (Post-Secondary Readiness). If you have a questions about any of the assessments on this list, please email Randall Butt at [randall.butt@wyo.gov](mailto:randall.butt@wyo.gov).

	<ul style="list-style-type: none"> <li>Accounting (2016 only)</li> <li>Business, Technology &amp; Operations (2016 only)</li> <li>Finance (2016 only)</li> </ul>	<ul style="list-style-type: none"> <li>ASK Entrepreneurship/ Management</li> <li>Virtual Enterprises</li> </ul>	<ul style="list-style-type: none"> <li>Business Information Processing</li> </ul> <b>Pathway Assessment</b> <ul style="list-style-type: none"> <li>Business Financial Management</li> <li>Financial &amp; Managerial Accounting</li> <li>General Management</li> </ul>
<b>Human Resources Management</b>			
<i>Pathway Assessment Options</i>	<b>Wyoming Developed Assessments</b>	<b>Business &amp; Industry Certifications</b>	<b>NOCTI</b>
	<ul style="list-style-type: none"> <li>Business, Technology &amp; Operations (2016 only)</li> </ul>	<b>NOCTI Business &amp; Industry Cert.</b> <ul style="list-style-type: none"> <li>ASK Business Certification</li> </ul>	<b>Pathway Assessment</b> <ul style="list-style-type: none"> <li>General Management</li> <li>Human Resources Management</li> </ul>
<b>Operations Management</b>			
<i>Pathway Assessment Options</i>	<b>Wyoming Developed Assessments</b>	<b>Business &amp; Industry Certifications</b>	<b>NOCTI</b>
	<ul style="list-style-type: none"> <li>Marketing, Management &amp; Entrepreneurship - <b>NEW PILOT ASSESSMENTS (Spring 2018)</b></li> <li>Business, Technology &amp; Operations (2016 only)</li> <li>Finance (2016 only)</li> </ul>	<ul style="list-style-type: none"> <li>Microsoft Office Specialist (MOS) Certification</li> </ul> <b>NOCTI Business &amp; Industry Cert.</b> <ul style="list-style-type: none"> <li>ASK Business Certification</li> <li>ASK Entrepreneurship/ Management</li> <li>Green Education Foundation Institute (GEFI) Sustainability 101</li> <li>Virtual Enterprises</li> </ul>	<b>Pathway Assessment</b> <ul style="list-style-type: none"> <li>Business Financial Management</li> <li>General Management</li> </ul>



## Education & Training

Planning, managing and providing education and training services, and related learning support services.

	<b>Administration &amp; Administrative Support</b>		
<i>Pathway Assessment Options</i>	<b>Wyoming Developed Assessments</b>	<b>Business &amp; Industry Certifications</b>	<b>NOCTI</b>
	<ul style="list-style-type: none"> <li>NA</li> </ul>	<ul style="list-style-type: none"> <li>Administrative Assistant Certification</li> <li>Certiport Quickbooks Certification</li> <li>Microsoft Office Specialist (MOS) Certification</li> <li>TestOut PC Pro</li> </ul>	<p><b>Job Ready Assessment</b></p> <ul style="list-style-type: none"> <li>Accounting Basic</li> <li>Accounting Advanced</li> <li>Administrative Assisting</li> <li>Advertising &amp; Design</li> <li>Visual Communication &amp; Multimedia Design</li> </ul> <p><b>Pathway Assessment</b></p> <ul style="list-style-type: none"> <li>Administrative Services</li> </ul>
	<b>Professional Support Services</b>		
<i>Pathway Assessment Options</i>	<b>Wyoming Developed Assessments</b>	<b>Business &amp; Industry Certifications</b>	<b>NOCTI</b>
	<ul style="list-style-type: none"> <li>NA</li> </ul>	<ul style="list-style-type: none"> <li>Child Development Associate National Certificate</li> </ul>	<p><b>Job Ready Assessment</b></p> <ul style="list-style-type: none"> <li>Early Childhood Education &amp; Care – Basic &amp; Advanced</li> <li>21<sup>st</sup> Century Skills Assessment</li> </ul>
	<b>Teaching/Training</b>		
<i>Pathway Assessment Options</i>	<b>Wyoming Developed Assessments</b>	<b>Business &amp; Industry Certifications</b>	<b>NOCTI</b>
	<ul style="list-style-type: none"> <li><b>Child Development (2016 only)</b></li> </ul>	<ul style="list-style-type: none"> <li>Basic Emergency Care</li> <li>Child Development Associate National Certificate</li> <li>Early Childhood Education (ECE) Certification</li> <li>Medical First Responder Certification</li> </ul>	<p><b>Job Ready Assessment</b></p> <ul style="list-style-type: none"> <li>Early Childhood Education &amp; Care – Basic &amp; Advanced</li> <li>21<sup>st</sup> Century Skills Assessment</li> </ul> <p><b>Pathway Assessment</b></p> <ul style="list-style-type: none"> <li>Education &amp; Training</li> </ul>

# Finance

Planning, services for financial and investment planning, banking, insurance, and business financial management.

<b>Accounting</b>			
<i>Pathway Assessment Options</i>	<b>Wyoming Developed Assessments</b>	<b>Business &amp; Industry Certifications</b>	<b>NOCTI</b>
	<ul style="list-style-type: none"> <li>Accounting (2016 only)</li> <li>Finance (2016 only)</li> </ul>	<ul style="list-style-type: none"> <li>Certiport Quickbooks Certification</li> </ul> <b>NOCTI Business &amp; Industry Cert.</b> <ul style="list-style-type: none"> <li>ASK Entrepreneurship Management</li> <li>Virtual Enterprises</li> </ul>	<b>Job Ready Assessment</b> <ul style="list-style-type: none"> <li>Accounting Basic</li> <li>Accounting Advanced</li> </ul> <b>Pathway Assessment</b> <ul style="list-style-type: none"> <li>Financial &amp; Managerial Accounting</li> </ul>
<b>Banking Services</b>			
<i>Pathway Assessment Options</i>	<b>Wyoming Developed Assessments</b>	<b>Business &amp; Industry Certifications</b>	<b>NOCTI</b>
	<ul style="list-style-type: none"> <li>Marketing, Management &amp; Entrepreneurship - <b>NEW PILOT ASSESSMENTS (Spring 2018)</b></li> <li>Accounting (2016 only)</li> </ul>	<ul style="list-style-type: none"> <li>Certiport Quickbooks Certification</li> </ul>	<b>Job Ready Assessment</b> <ul style="list-style-type: none"> <li>Retail Commercial Banking</li> </ul> <b>Pathway Assessment</b> <ul style="list-style-type: none"> <li>Banking &amp; Related Services</li> <li>Financial &amp; Investment Planning</li> </ul>
<b>Business Finance</b>			
<i>Pathway Assessment Options</i>	<b>Wyoming Developed Assessments</b>	<b>Business &amp; Industry Certifications</b>	<b>NOCTI</b>
	<ul style="list-style-type: none"> <li>Marketing, Management &amp; Entrepreneurship - <b>NEW PILOT ASSESSMENTS (Spring 2018)</b></li> <li>Accounting (2016 only)</li> <li>Finance (2016 only)</li> </ul>	<ul style="list-style-type: none"> <li>Certiport Quickbooks Certification</li> </ul> <b>NOCTI Business &amp; Industry Cert.</b> <ul style="list-style-type: none"> <li>ASK Business Certification</li> <li>ASK Finance</li> <li>Virtual Enterprises</li> </ul>	<b>Pathway Assessment</b> <ul style="list-style-type: none"> <li>Business Financial Management</li> <li>Financial &amp; Investment Planning</li> </ul>
<b>Insurance</b>			



Note: This list is not exhaustive – it includes only those assessments that can be administered and reported for Perkins and State of Wyoming Accountability purposes (Post-Secondary Readiness). If you have a questions about any of the assessments on this list, please email Randall Butt at [randall.butt@wyo.gov](mailto:randall.butt@wyo.gov).

<i>Pathway Assessment Options</i>	<b>Wyoming Developed Assessments</b>	<b>Business &amp; Industry Certifications</b>	<b>NOCTI</b>
	<ul style="list-style-type: none"> <li>• NA</li> </ul>	<ul style="list-style-type: none"> <li>• NA</li> </ul>	<ul style="list-style-type: none"> <li>• 21<sup>st</sup> Century Skills Assessment</li> </ul>
<b>Securities &amp; Investments</b>			
<i>Pathway Assessment Options</i>	<b>Wyoming Developed Assessments</b>	<b>Business &amp; Industry Certifications</b>	<b>NOCTI</b>
			<b>Pathway Assessment</b> <ul style="list-style-type: none"> <li>• Financial &amp; Investment Planning</li> <li>• 21<sup>st</sup> Century Skills Assessment</li> </ul>

## Government & Public Administration

*Planning and performing government functions at the local, state and federal levels, including governance, national security, foreign service, planning, revenue and taxation, and regulations.*

	<b>Governance</b>		
<i>Pathway Assessment Options</i>	<b>Wyoming Developed Assessments</b>	<b>Business &amp; Industry Certifications</b>	<b>NOCTI</b>
	<ul style="list-style-type: none"> <li>• NA</li> </ul>	<ul style="list-style-type: none"> <li>• NA</li> </ul>	<b>Job Ready Assessment</b> <ul style="list-style-type: none"> <li>• 21<sup>st</sup> Century Skills Assessment</li> </ul>
	<b>National Security</b>		
<i>Pathway Assessment Options</i>	<b>Wyoming Developed Assessments</b>	<b>Business &amp; Industry Certifications</b>	<b>NOCTI</b>
		<ul style="list-style-type: none"> <li>• Cyber Security Education Consortium (CES) National Security Systems Certificate</li> </ul>	<b>Job Ready Assessment</b> <ul style="list-style-type: none"> <li>• Criminal Justice</li> <li>• Criminal Justice – Advanced</li> <li>• Protective Services</li> </ul> <b>Pathway Assessment</b> <ul style="list-style-type: none"> <li>• Security &amp; Protective Services</li> </ul>
	<b>Planning</b>		
<i>Pathway Assessment Options</i>	<b>Wyoming Developed Assessments</b>	<b>Business &amp; Industry Certifications</b>	<b>NOCTI</b>
	<ul style="list-style-type: none"> <li>• NA</li> </ul>	<ul style="list-style-type: none"> <li>• NA</li> </ul>	<b>Job Ready Assessment</b> <ul style="list-style-type: none"> <li>• 21<sup>st</sup> Century Skills Assessment</li> </ul>
	<b>Public Management &amp; Administration</b>		
<i>Pathway Assessment Options</i>	<b>Wyoming Developed Assessments</b>	<b>Business &amp; Industry Certifications</b>	<b>NOCTI</b>
		<b>NOCTI Business &amp; Industry Cert.</b> <ul style="list-style-type: none"> <li>• Green Education Foundation Institute (GEFI) Sustainability 101</li> </ul>	<b>Job Ready Assessment</b> <ul style="list-style-type: none"> <li>• 21<sup>st</sup> Century Skills Assessment</li> </ul>



*Note: This list is not exhaustive – it includes only those assessments that can be administered and reported for Perkins and State of Wyoming Accountability purposes (Post-Secondary Readiness). If you have a questions about any of the assessments on this list, please email Randall Butt at [randall.butt@wyo.gov](mailto:randall.butt@wyo.gov).*

<b>Regulation</b>			
<i>Pathway Assessment Options</i>	<b>Wyoming Developed Assessments</b>	<b>Business &amp; Industry Certifications</b>	<b>NOCTI</b>
	<ul style="list-style-type: none"> <li>• NA</li> </ul>	<ul style="list-style-type: none"> <li>• NA</li> </ul>	<b>Job Ready Assessment</b> <ul style="list-style-type: none"> <li>• 21<sup>st</sup> Century Skills Assessment</li> </ul>
<b>Revenue &amp; Taxation</b>			
<i>Pathway Assessment Options</i>	<b>Wyoming Developed Assessments</b>	<b>Business &amp; Industry Certifications</b>	<b>NOCTI</b>
	<ul style="list-style-type: none"> <li>• NA</li> </ul>	<ul style="list-style-type: none"> <li>• NA</li> </ul>	<b>Job Ready Assessment</b> <ul style="list-style-type: none"> <li>• 21<sup>st</sup> Century Skills Assessment</li> </ul>

## Health Sciences

*Planning, managing, and providing therapeutic services, diagnostic services, health informatics, support services, and biotechnology research and development.*

<b>Biotechnology Research &amp; Development</b>			
<i>Pathway Assessment Options</i>	<b>Wyoming Developed Assessments</b>	<b>Business &amp; Industry Certifications</b>	<b>NOCTI</b>
	<ul style="list-style-type: none"> <li>• NA</li> </ul>	<ul style="list-style-type: none"> <li>• Cardiopulmonary Resuscitation (CPR) and First Aid</li> <li>• Phlebotomy Technician Certification</li> </ul>	<b>Job Ready Assessment</b> <ul style="list-style-type: none"> <li>• Biotechnology</li> <li>• 21<sup>st</sup> Century Skills Assessment</li> </ul> <b>Pathway Assessment</b> <ul style="list-style-type: none"> <li>• Diagnostic Services</li> </ul>
<b>Diagnostic Services</b>			
<i>Pathway Assessment Options</i>	<b>Wyoming Developed Assessments</b>	<b>Business &amp; Industry Certifications</b>	<b>NOCTI</b>
	<ul style="list-style-type: none"> <li>• NA</li> </ul>	<ul style="list-style-type: none"> <li>• Acute Care &amp; Critical Care Nurse (ACCN) Certification</li> <li>• Basic Emergency Care</li> <li>• Cardiopulmonary Resuscitation (CPR) and First Aid</li> <li>• Certified Nursing Assistant (CNA)</li> <li>• Medical First Responder Certification</li> <li>• Phlebotomy Technician Certification</li> </ul>	<b>Job Ready Assessment</b> <ul style="list-style-type: none"> <li>• Dental Assisting</li> <li>• Nursing Assisting</li> <li>• Practical Nursing</li> </ul> <b>Pathway Assessment</b> <ul style="list-style-type: none"> <li>• Diagnostic Services</li> </ul>
<b>Health Informatics</b>			
<i>Pathway Assessment Options</i>	<b>Wyoming Developed Assessments</b>	<b>Business &amp; Industry Certifications</b>	<b>NOCTI</b>
			<b>Pathway Assessment</b> <ul style="list-style-type: none"> <li>• Health Informatics</li> <li>• 21<sup>st</sup> Century Skills Assessment</li> </ul>

	<b>Support Services</b>		
<i>Pathway Assessment Options</i>	<b>Wyoming Developed Assessments</b>	<b>Business &amp; Industry Certifications</b>	<b>NOCTI</b>
	<ul style="list-style-type: none"> <li>• NA</li> </ul>	<ul style="list-style-type: none"> <li>• Acute Care &amp; Critical Care Nurse (ACCN) Certification</li> <li>• Basic Emergency Care</li> <li>• Cardiopulmonary Resuscitation (CPR) and First Aid</li> <li>• Certified Nursing Assistant (CNA)</li> <li>• Medical First Responder Certification</li> <li>• Medical Office Assistant (MOAS) Certification</li> <li>• Phlebotomy Technician Certification</li> </ul>	<b>Job Ready Assessment</b> <ul style="list-style-type: none"> <li>• Dental Assisting</li> <li>• Health Assisting</li> <li>• Home Health Aide</li> <li>• Medical Assisting</li> <li>• Nursing Assisting</li> <li>• Practical Nursing</li> </ul> <b>Pathway Assessment</b> <ul style="list-style-type: none"> <li>• Diagnostic Services</li> <li>• Emergency Medical Services</li> </ul>
	<b>Therapeutic Services</b>		
<i>Pathway Assessment Options</i>	<b>Wyoming Developed Assessments</b>	<b>Business &amp; Industry Certifications</b>	<b>NOCTI</b>
	<ul style="list-style-type: none"> <li>• NA</li> </ul>	<ul style="list-style-type: none"> <li>• Acute Care &amp; Critical Care Nurse (ACCN) Certification</li> <li>• Basic Emergency Care</li> <li>• Cardiopulmonary Resuscitation (CPR) and First Aid</li> <li>• Certified Nursing Assistant (CNA)</li> <li>• Medical Office Assistant (MOAS) Certification</li> <li>• Phlebotomy Technician Certification</li> </ul>	<b>Job Ready Assessment</b> <ul style="list-style-type: none"> <li>• Dental Assisting</li> <li>• Health Assisting</li> <li>• Medical Assisting</li> <li>• Nursing Assisting</li> <li>• Practical Nursing</li> </ul> <b>Pathway Assessment</b> <ul style="list-style-type: none"> <li>• Diagnostic Services</li> <li>• Therapeutic Services</li> </ul>

## Hospitality & Tourism

The management, marketing and operations of restaurants and other food services, lodging, attractions, recreation events and travel related services.

	<b>Lodging</b>		
<i>Pathway Assessment Options</i>	<b>Wyoming Developed Assessments</b>	<b>Business &amp; Industry Certifications</b>	<b>NOCTI</b>
	<ul style="list-style-type: none"> <li>Professional Foods (2016 only)</li> </ul>	<ul style="list-style-type: none"> <li>National Certification – American Hotel &amp; Lodging Association</li> <li>Guest Service Gold – American Hotel &amp; Lodging Association</li> </ul>	<b>Job Ready Assessment</b> <ul style="list-style-type: none"> <li>Hospitality Management – Food &amp; Beverage</li> <li>Hospitality Management – Lodging</li> </ul> <b>Pathway Assessment</b> <ul style="list-style-type: none"> <li>Lodging</li> <li>Travel &amp; Tourism</li> <li>Restaurant, Food &amp; Beverage Services</li> </ul>
	<b>Recreation, Amusement &amp; Attractions</b>		
<i>Pathway Assessment Options</i>	<b>Wyoming Developed Assessments</b>	<b>Business &amp; Industry Certifications</b>	<b>NOCTI</b>
	<ul style="list-style-type: none"> <li>Professional Foods (2016 only)</li> </ul>		<b>Job Ready Assessment</b> <ul style="list-style-type: none"> <li>21<sup>st</sup> Century Skills Assessment</li> </ul> <b>Pathway Assessment</b> <ul style="list-style-type: none"> <li>Recreation, Amusements &amp; Attractions</li> </ul>
	<b>Restaurants &amp; Food/Beverage Services</b>		
<i>Pathway Assessment Options</i>	<b>Wyoming Developed Assessments</b>	<b>Business &amp; Industry Certifications</b>	<b>NOCTI</b>
	<ul style="list-style-type: none"> <li>Professional Foods (2016 only)</li> <li>Food, Nutrition and Wellness (2016 only)</li> </ul>	<ul style="list-style-type: none"> <li>Culinary ProStart</li> <li>ServSafe Food Protection Manager</li> <li>ServSafe Food Handler</li> </ul>	<b>Job Ready Assessment</b> <ul style="list-style-type: none"> <li>Commercial Foods</li> <li>Culinary Arts – Level 1 – Prep Cook</li> <li>Culinary Arts – Level 2 – Cook</li> </ul>



			<ul style="list-style-type: none"> <li>Hospitality Management – Food &amp; Beverage</li> </ul> <b>Pathway Assessment</b> <ul style="list-style-type: none"> <li>Restaurant, Food &amp; Beverage</li> </ul>
	<b>Travel &amp; Tourism</b>		
<i>Pathway Assessment Options</i>	<b>Wyoming Developed Assessments</b>	<b>Business &amp; Industry Certifications</b>	<b>NOCTI</b>
	<ul style="list-style-type: none"> <li>Professional Foods (2016 only)</li> <li>Tourism, Hospitality &amp; Lodging (2016 only)</li> </ul>	<ul style="list-style-type: none"> <li>Guest Service Gold American Hotel &amp; Lodging Association</li> <li>National Certification – American Hotel &amp; Lodging Association</li> </ul>	<b>Job Ready Assessment</b> <ul style="list-style-type: none"> <li>Hospitality Management – Food &amp; Beverage</li> <li>Hospitality Management - Lodging</li> </ul> <b>Pathway Assessment</b> <ul style="list-style-type: none"> <li>Travel &amp; Tourism</li> </ul>

## Human Services

Planning, managing, and providing therapeutic services, diagnostic services, health informatics, support services, and biotechnology research and development.

	Consumer Services		
Pathway Assessment Options	Wyoming Developed Assessments	Business & Industry Certifications	NOCTI
	<ul style="list-style-type: none"> <li>Food, Nutrition and Wellness (2016 only)</li> <li>Textiles (2016 only)</li> </ul>	<ul style="list-style-type: none"> <li>Culinary ProStart</li> <li>ServSafe Food Protection Manager</li> <li>ServSafe Food Handler</li> </ul>	<b>Job Ready Assessment</b> <ul style="list-style-type: none"> <li>Apparel &amp; Textile Production &amp; Merchandising</li> <li>Commercial Foods</li> <li>Culinary Arts – Level 1- Prep Cook</li> <li>Culinary Arts – Level 2 – Cook</li> <li>Interior Decorating &amp; Design</li> </ul>
	Counseling & Mental Health Services		
Pathway Assessment Options	Wyoming Developed Assessments	Business & Industry Certifications	NOCTI
	<ul style="list-style-type: none"> <li>NA</li> </ul>	<ul style="list-style-type: none"> <li>NA</li> </ul>	<b>Job Ready Assessment</b> <ul style="list-style-type: none"> <li>21<sup>st</sup> Century Skills Assessment</li> </ul>
	Early Childhood Development & Services		
Pathway Assessment Options	Wyoming Developed Assessments	Business & Industry Certifications	NOCTI
	<ul style="list-style-type: none"> <li>Child Development (2016 only)</li> <li>Professional Foods (2016 only)</li> </ul>	<ul style="list-style-type: none"> <li>Child Development Associate National Certificate (CDA)</li> <li>First Aid/CPR/AED (Stackable)</li> <li>ServSafe Food Protection Manager</li> <li>ServSafe Food Handler</li> </ul>	<b>Job Ready Assessment</b> <ul style="list-style-type: none"> <li>Early Childhood Education &amp; Care – Basic &amp; Advanced</li> </ul> <b>Pathway Assessment</b> <ul style="list-style-type: none"> <li>Early Childhood Development &amp; Services</li> </ul>

<b>Family &amp; Community Services</b>			
<i>Pathway Assessment Options</i>	<b>Wyoming Developed Assessments</b>	<b>Business &amp; Industry Certifications</b>	<b>NOCTI</b>
	<ul style="list-style-type: none"> <li>Professional Foods (2016 only)</li> <li>Textiles (2016 only)</li> </ul>	<ul style="list-style-type: none"> <li>Cardiopulmonary Resuscitation (CPR) and First Aid</li> <li>Certified Nursing Assistant (CNA)</li> <li>Culinary ProStart</li> <li>Phlebotomy Technician Certification</li> <li>ServSafe Food Protection Manager</li> <li>ServSafe Food Handler</li> </ul>	<p><b>Job Ready Assessment</b></p> <ul style="list-style-type: none"> <li>Apparel &amp; Textile Production &amp; Merchandising</li> <li>Commercial Foods</li> <li>Cosmetology</li> <li>Early Childhood Education &amp; Care – Basic &amp; Advanced</li> </ul> <p><b>Pathway Assessment</b></p> <ul style="list-style-type: none"> <li>Family &amp; Community Services</li> <li>Interior Decorating &amp; Design</li> </ul>
<b>Personal Care Services</b>			
<i>Pathway Assessment Options</i>	<b>Wyoming Developed Assessments</b>	<b>Business &amp; Industry Certifications</b>	<b>NOCTI</b>
	<ul style="list-style-type: none"> <li>Textiles (2016 only)</li> </ul>	<ul style="list-style-type: none"> <li>Cardiopulmonary Resuscitation (CPR) and First Aid</li> <li>Certified Nursing Assistant (CNA)</li> <li>Phlebotomy Technician Certification</li> </ul>	<p><b>Job Ready Assessment</b></p> <ul style="list-style-type: none"> <li>Cosmetology</li> </ul> <p><b>Pathway Assessment</b></p> <ul style="list-style-type: none"> <li>Personal Care Services</li> </ul>

# Information Technology

*Building linkages in IT occupations for entry level, technical and professional careers related to the design, development, support and management of hardware, software, multimedia and systems integration services.*

<b>Information Support &amp; Services</b>			
<i>Pathway Assessment Options</i>	<b>Wyoming Developed Assessments</b>	<b>Business &amp; Industry Certifications</b>	<b>NOCTI</b>
	<ul style="list-style-type: none"> <li><b>Business, Technology and Operations (2016 only)</b></li> </ul>	<ul style="list-style-type: none"> <li>A+ Certification</li> <li>Analytics for Data Science Certification</li> <li>Computer Information Systems (CIS) Certificate</li> <li>Coordinated Assistance Network Certification</li> <li>Information Sciences &amp; Technology (IST) Certification</li> <li>Microsoft Office Specialist (MOS) Certification</li> <li>ServSafe Food Production Manager</li> <li>TestOut Desktop Pro Certification</li> <li>TestOut PC Pro</li> </ul> <p><b>NOCTI Business &amp; Industry Cert.</b></p> <ul style="list-style-type: none"> <li>ETAS-I's Student Electronics Technician (SET) Certification</li> </ul>	<p><b>Job Ready Assessment</b></p> <ul style="list-style-type: none"> <li>Advertising &amp; Design</li> <li>Business Information Processing</li> <li>Computer Repair Technology</li> <li>Computer Technology</li> <li>Visual Communication &amp; Multimedia Design</li> </ul> <p><b>Pathway Assessment</b></p> <ul style="list-style-type: none"> <li>Information Support &amp; Services</li> </ul>
<b>Network Systems</b>			
<i>Pathway Assessment Options</i>	<b>Wyoming Developed Assessments</b>	<b>Business &amp; Industry Certifications</b>	<b>NOCTI</b>
	<ul style="list-style-type: none"> <li><b>Business, Technology and Operations (2016 only)</b></li> </ul>	<ul style="list-style-type: none"> <li>A+ Certification</li> <li>APRO – Apple Pro Computer Certification</li> <li>Computer Systems and Network Technology (CSNT)</li> </ul>	<p><b>Job Ready Assessment</b></p> <ul style="list-style-type: none"> <li>Computer Networking Fundamentals</li> </ul> <p><b>Pathway Assessment</b></p> <ul style="list-style-type: none"> <li>Network systems</li> </ul>

		<ul style="list-style-type: none"> <li>Coordinated Assistance Network Certification</li> <li>Internet &amp; Computing Core (IC3) Certification</li> <li>TestOut Desktop Pro Certification</li> <li>TestOut Network Pro Certification</li> </ul>	
<b>Programming &amp; Software Development</b>			
<i>Pathway Assessment Options</i>	<b>Wyoming Developed Assessments</b>	<b>Business &amp; Industry Certifications</b>	<b>NOCTI</b>
	<ul style="list-style-type: none"> <li>NA</li> </ul>	<ul style="list-style-type: none"> <li>A+ Certification</li> <li>Programming for Data Science Certification</li> <li>TestOut Desktop Pro Certification</li> <li>TestOut Network Pro Certification</li> </ul>	<b>Job Ready Assessment</b> <ul style="list-style-type: none"> <li>Computer Programming</li> <li>Computer Technology</li> </ul>
<b>Web &amp; Digital Communications</b>			
<i>Pathway Assessment Options</i>	<b>Wyoming Developed Assessments</b>	<b>Business &amp; Industry Certifications</b>	<b>NOCTI</b>
	<ul style="list-style-type: none"> <li>Business, Technology and Operations (2016 only)</li> </ul>	<ul style="list-style-type: none"> <li>CSS Certification</li> <li>TestOut Desktop Pro Certification</li> <li>TestOut Network Pro Certification</li> <li>TestOut PC Pro</li> </ul> <b>NOCTI Business &amp; Industry Cert.</b> <ul style="list-style-type: none"> <li>Virtual Enterprises</li> </ul>	<b>Job Ready Assessment</b> <ul style="list-style-type: none"> <li>Audio-Visual Communications</li> <li>Visual Communication &amp; Multimedia Design</li> <li>Web Design</li> </ul> <b>Pathway Assessment</b> <ul style="list-style-type: none"> <li>Interactive Media</li> </ul>

## Law, Public Safety, Corrections & Security

*Planning, managing, and providing legal, public safety, protective services and homeland security, including professional and technical support services.*

<b>Correction Services</b>			
<i>Pathway Assessment Options</i>	<b>Wyoming Developed Assessments</b>	<b>Business &amp; Industry Certifications</b>	<b>NOCTI</b>
	<ul style="list-style-type: none"> <li>• NA</li> </ul>	<ul style="list-style-type: none"> <li>• Cyber Security Education Consortium (CSEC) National Security Systems Certificate</li> </ul>	<b>Job Ready Assessment</b> <ul style="list-style-type: none"> <li>• Criminal Justice</li> <li>• Criminal Justice – Advanced</li> <li>• Protective Services</li> </ul> <b>Pathway Assessment</b> <ul style="list-style-type: none"> <li>• Security &amp; Protective Services</li> </ul>
<b>Emergency &amp; Fire Management Services</b>			
<i>Pathway Assessment Options</i>	<b>Wyoming Developed Assessments</b>	<b>Business &amp; Industry Certifications</b>	<b>NOCTI</b>
	<ul style="list-style-type: none"> <li>• NA</li> </ul>	<ul style="list-style-type: none"> <li>• Cardiopulmonary Resuscitation (CPR) and First Aid</li> <li>• Certified Nursing Assistant (CNA)</li> </ul>	<b>Job Ready Assessment</b> <ul style="list-style-type: none"> <li>• Protective Services</li> <li>• Visual Communication &amp; Multimedia Design</li> </ul> <b>Pathway Assessment</b> <ul style="list-style-type: none"> <li>• Emergency &amp; Fire Management Services</li> <li>• Emergency Medical Services</li> </ul>
<b>Law Enforcement Services</b>			
<i>Pathway Assessment Options</i>	<b>Wyoming Developed Assessments</b>	<b>Business &amp; Industry Certifications</b>	<b>NOCTI</b>
	<ul style="list-style-type: none"> <li>• NA</li> </ul>	<ul style="list-style-type: none"> <li>• NA</li> </ul>	<b>Job Ready Assessment</b> <ul style="list-style-type: none"> <li>• Criminal Justice</li> <li>• Criminal Justice – Advanced</li> <li>• Protective Services</li> </ul>



*Note: This list is not exhaustive – it includes only those assessments that can be administered and reported for Perkins and State of Wyoming Accountability purposes (Post-Secondary Readiness). If you have a questions about any of the assessments on this list, please email Randall Butt at [randall.butt@wyo.gov](mailto:randall.butt@wyo.gov).*

	<b>Legal Services</b>		
<i>Pathway Assessment Options</i>	<b>Wyoming Developed Assessments</b>	<b>Business &amp; Industry Certifications</b>	<b>NOCTI</b>
	<ul style="list-style-type: none"> <li>• NA</li> </ul>	<ul style="list-style-type: none"> <li>• NA</li> </ul>	<b>Job Ready Assessment</b> <ul style="list-style-type: none"> <li>• Criminal Justice</li> <li>• Criminal Justice – Advanced</li> <li>• Legal Services</li> <li>• Protective Services</li> </ul>
	<b>Security &amp; Protective Services</b>		
<i>Pathway Assessment Options</i>	<b>Wyoming Developed Assessments</b>	<b>Business &amp; Industry Certifications</b>	<b>NOCTI</b>
	<ul style="list-style-type: none"> <li>• NA</li> </ul>	<ul style="list-style-type: none"> <li>• Cyber Security Education Consortium (CSEC)</li> <li>• National Security Systems Certificate</li> </ul>	<b>Job Ready Assessment</b> <ul style="list-style-type: none"> <li>• Criminal Justice</li> <li>• Criminal Justice – Advanced</li> <li>• Protective Services</li> </ul> <b>Pathway Assessment</b> <ul style="list-style-type: none"> <li>• Security &amp; Protective Services</li> </ul>

# Manufacturing

*Planning, managing and performing the processing of materials into intermediate or final products and related professional and technical support activities such as production planning and control, maintenance and manufacturing/process engineering.*

Maintenance, Installation & Repair			
Pathway Assessment Options	Wyoming Developed Assessments	Business & Industry Certifications	NOCTI
	<p><b>NEW PILOT ASSESSMENTS (Spring 2018)</b></p> <ul style="list-style-type: none"> <li>• Agricultural Mechanics</li> <li>• Manufacturing Welding</li> </ul>	<ul style="list-style-type: none"> <li>• AWS</li> <li>• Measurement while Drilling Engineer Certification</li> <li>• OSHA 10 Hour Certification</li> </ul> <p>ASE Automobile Series</p> <ul style="list-style-type: none"> <li>• Automatic Transmission/Transaxle</li> <li>• Automobile Service Technology</li> <li>• Brakes</li> <li>• Electrical/Electronic Systems</li> <li>• Engine Performance</li> <li>• Engine Repair</li> <li>• Heating &amp; Air Conditioning</li> <li>• Maintenance &amp; Light Repair</li> <li>• Manual Drive Train &amp; Axles</li> <li>• Suspension &amp; Steering</li> </ul> <p>ASE Collision, Repair &amp; Refinish Series</p> <ul style="list-style-type: none"> <li>• Mechanical &amp; Electrical</li> <li>• Non-structural Analysis &amp; Damage Repair</li> <li>• Painting &amp; Refinishing</li> <li>• Structural Analysis &amp; Damage Repair</li> </ul> <p>ASE M/H Truck Series</p> <ul style="list-style-type: none"> <li>• Brake (M/H Truck)</li> <li>• Diesel Engines</li> </ul>	<p><b>Job Ready Assessment</b></p> <ul style="list-style-type: none"> <li>• Precision Machining</li> <li>• Welding</li> </ul>



*Note: This list is not exhaustive – it includes only those assessments that can be administered and reported for Perkins and State of Wyoming Accountability purposes (Post-Secondary Readiness). If you have a questions about any of the assessments on this list, please email Randall Butt at [randall.butt@wyo.gov](mailto:randall.butt@wyo.gov).*



		<ul style="list-style-type: none"> <li>Electrical/Electronic Systems (M/H Truck)</li> <li>Steering &amp; Suspension (M/H Truck)</li> </ul>	
<b>Manufacturing Production Process Development</b>			
<i>Pathway Assessment Options</i>	<b>Wyoming Developed Assessments</b>	<b>Business &amp; Industry Certifications</b>	<b>NOCTI</b>
	<p><b>NEW PILOT ASSESSMENTS (Spring 2018)</b></p> <ul style="list-style-type: none"> <li>Agricultural Mechanics</li> <li>Architectural Drafting Wyoming</li> <li>Cabinetmaking &amp; Woodworking</li> <li>Commercial &amp; Residential Carpentry</li> <li>Manufacturing Welding</li> <li>Technical Drafting Wyoming</li> </ul>	<ul style="list-style-type: none"> <li>AWS</li> <li>Manufacturing Skills Standards Council (MSSC) – Certified Logistics Associate/ Technician (CLA/CLT)</li> <li>Manufacturing Skills Standards Council (MSSC) – Certified Production Technician (CPT)</li> <li>Measurement while Drilling Engineer Certification</li> <li>OSHA 10 Hour Certification</li> <li>SENSE Welding Certification</li> <li>SolidWorks Certification</li> <li>ASE Automobile Series                             <ul style="list-style-type: none"> <li>Automatic Transmission/ Transaxle</li> <li>Automobile Service Technology</li> <li>Brakes</li> <li>Electrical/Electronic Systems</li> <li>Engine Performance</li> <li>Engine Repair</li> <li>Heating &amp; Air Conditioning</li> <li>Maintenance &amp; Light Repair</li> <li>Manual Drive Train &amp; Axles</li> <li>Suspension &amp; Steering</li> </ul> </li> <li>ASE Collision, Repair &amp; Refinish Series</li> </ul>	<p><b>Job Ready Assessment</b></p> <ul style="list-style-type: none"> <li>CAD-CAM</li> <li>Manufacturing Technology</li> <li>Precision Machining</li> <li>Welding</li> </ul>



*Note: This list is not exhaustive – it includes only those assessments that can be administered and reported for Perkins and State of Wyoming Accountability purposes (Post-Secondary Readiness). If you have a questions about any of the assessments on this list, please email Randall Butt at [randall.butt@wyo.gov](mailto:randall.butt@wyo.gov).*

		<ul style="list-style-type: none"> <li>• Mechanical &amp; Electrical</li> <li>• Non-structural Analysis &amp; Damage Repair</li> <li>• Painting &amp; Refinishing</li> <li>• Structural Analysis &amp; Damage Repair</li> </ul> <p>ASE M/H Truck Series</p> <ul style="list-style-type: none"> <li>• Brake (M/H Truck)</li> <li>• Diesel Engines</li> <li>• Electrical/Electronic Systems (M/H Truck)</li> <li>• Steering &amp; Suspension (M/H Truck)</li> </ul>	
<b>Production</b>			
<i>Pathway Assessment Options</i>	<b>Wyoming Developed Assessments</b>	<b>Business &amp; Industry Certifications</b>	<b>NOCTI</b>
	<p><b>NEW PILOT ASSESSMENTS (Spring 2018)</b></p> <ul style="list-style-type: none"> <li>• Agriculture Mechanics</li> <li>• Cabinetmaking &amp; Woodworking</li> <li>• Manufacturing Welding</li> <li>• Technical Drafting – Wyoming</li> <li>• <b>Textiles (2016 only)</b></li> </ul>	<ul style="list-style-type: none"> <li>• AWS</li> <li>• Manufacturing Skills Standards Council (MSSC) – Certified Logistics Associate/Technician (CLA/CLT)</li> <li>• Manufacturing Skills Standards Council (MSSC) – Certified Production Technician (CPT)</li> <li>• Measurement while Drilling Engineer Certification</li> <li>• OSHA 10 Hour Certification</li> <li>• SolidWorks Certification</li> </ul>	<p><b>Job Ready Assessment</b></p> <ul style="list-style-type: none"> <li>• CAD</li> <li>• CAD-CAM</li> <li>• Manufacturing Technology</li> <li>• Precision Machining</li> <li>• Welding</li> </ul>
<b>Quality Assurance</b>			
<i>Pathway Assessment Options</i>	<b>Wyoming Developed Assessments</b>	<b>Business &amp; Industry Certifications</b>	<b>NOCTI</b>
	<p><b>NEW PILOT ASSESSMENTS (Spring 2018)</b></p> <ul style="list-style-type: none"> <li>• Manufacturing Welding</li> </ul>	<ul style="list-style-type: none"> <li>• Measurement while Drilling Engineer Certification</li> </ul> <p><b>NOCTI Business &amp; Industry Cert.</b></p> <ul style="list-style-type: none"> <li>• Green Education Foundation Institute (GEFI) Sustainability 101</li> </ul>	<p><b>Job Ready Assessment</b></p> <ul style="list-style-type: none"> <li>• 21<sup>st</sup> Century Skills Assessment</li> </ul>



*Note: This list is not exhaustive – it includes only those assessments that can be administered and reported for Perkins and State of Wyoming Accountability purposes (Post-Secondary Readiness). If you have a questions about any of the assessments on this list, please email Randall Butt at [randall.butt@wyo.gov](mailto:randall.butt@wyo.gov).*

# Marketing

*Planning, managing and performing marketing activities to reach organizational objectives.*

	Marketing Communications		
Pathway Assessment Options	Wyoming Developed Assessments	Business & Industry Certifications	NOCTI
	<ul style="list-style-type: none"> <li>Marketing, Management &amp; Entrepreneurship - <b>NEW PILOT ASSESSMENTS (Spring 2018)</b></li> </ul>	<b>NOCTI Business &amp; Industry Cert.</b> <ul style="list-style-type: none"> <li>ASK Fundamental Marketing Concepts</li> </ul>	<b>Job Ready Assessment</b> <ul style="list-style-type: none"> <li>Advertising &amp; Design</li> <li>Audio Visual Communications</li> <li>Visual Communication &amp; Multimedia Design</li> </ul>
	Marketing Management		
Pathway Assessment Options	Wyoming Developed Assessments	Business & Industry Certifications	NOCTI
	<ul style="list-style-type: none"> <li>Marketing, Management &amp; Entrepreneurship - <b>NEW PILOT ASSESSMENTS (Spring 2018)</b></li> <li>Business, Technology &amp; Operations (2016 only)</li> <li>Accounting (2016 only)</li> </ul>	<b>NOCTI Business &amp; Industry Cert.</b> <ul style="list-style-type: none"> <li>ASK Entrepreneurship/Management</li> <li>ASK Fundamental Marketing Concepts</li> </ul>	<b>Job Ready Assessment</b> <ul style="list-style-type: none"> <li>21<sup>st</sup> Century Skills Assessment</li> </ul>
	Marketing Research		
Pathway Assessment Options	Wyoming Developed Assessments	Business & Industry Certifications	NOCTI
	<b>NEW PILOT ASSESSMENTS (Spring 2018)</b> <ul style="list-style-type: none"> <li>Marketing, Management &amp; Entrepreneurship</li> </ul>	<b>NOCTI Business &amp; Industry Cert.</b> <ul style="list-style-type: none"> <li>ASK Fundamental Marketing Concepts</li> </ul>	<b>Job Ready Assessment</b> <ul style="list-style-type: none"> <li>21<sup>st</sup> Century Skills Assessment</li> </ul>
	Merchandising		
Pathway Assessment Options	Wyoming Developed Assessments	Business & Industry Certifications	NOCTI
	<ul style="list-style-type: none"> <li>Marketing, Management &amp; Entrepreneurship - <b>NEW PILOT ASSESSMENTS (Spring 2018)</b></li> <li>Textiles (2016 only)</li> </ul>	<ul style="list-style-type: none"> <li>NA</li> </ul>	<b>Job Ready Assessment</b> <ul style="list-style-type: none"> <li>Business Information Processing</li> <li>Fashion Merchandising</li> <li>Retail Merchandising</li> </ul>

	<b>Professional Sales</b>		
<i>Pathway Assessment Options</i>	<b>Wyoming Developed Assessments</b>	<b>Business &amp; Industry Certifications</b>	<b>NOCTI</b>
	<ul style="list-style-type: none"> <li>• <b>Textiles (2016 only)</b></li> <li>• <b>Marketing, Management &amp; Entrepreneurship - NEW PILOT ASSESSMENTS (Spring 2018)</b></li> </ul>	<b>NOCTI Business &amp; Industry Cert.</b> <ul style="list-style-type: none"> <li>• ASK Fundamental Marketing Concepts</li> </ul>	<b>Job Ready Assessment</b> <ul style="list-style-type: none"> <li>• Retail Merchandising</li> <li>• Visual Communication &amp; Multimedia Design</li> </ul>

# Science, Technology, Engineering & Mathematics

Planning, managing and providing scientific research and professional and technical services (e.g., physical science, social science, engineering) including laboratory and testing services, and research and development services.

Engineering & Technology			
Pathway Assessment Options	Wyoming Developed Assessments	Business & Industry Certifications	NOCTI
	<p><b>NEW PILOT ASSESSMENTS (Spring 2018)</b></p> <ul style="list-style-type: none"> <li>Architectural Drafting Wyoming</li> <li>Cabinetmaking &amp; Woodworking</li> <li>Manufacturing Welding</li> <li>Technical Drafting Wyoming</li> </ul>	<p>AWS</p> <ul style="list-style-type: none"> <li>AutoDesk Certification</li> <li>Autodesk Inventor</li> <li>Autodesk Revit Architecture</li> <li>Cardiopulmonary Resuscitation (CPR) and First Aid</li> <li>Certified Nursing Assistant (CNA)</li> <li>H2S Certification (Hydrogen Sulfide)</li> <li>OSHA 10 Hour Certification</li> <li>Phlebotomy Technician Certification</li> <li>SolidWorks Certification</li> </ul> <p><b>NOCTI Business &amp; Industry Cert.</b></p> <ul style="list-style-type: none"> <li>Green Education Foundation Institute (GEFI) Sustainability 101</li> </ul>	<p><b>Job Ready Assessments</b></p> <ul style="list-style-type: none"> <li>Architectural Drafting</li> <li>Biotechnology</li> <li>Electric Power &amp; Distribution</li> <li>Electronics</li> <li>Electronics Technology</li> <li>Industrial Electricity</li> <li>Industrial Electronics</li> <li>Mechatronics - Level 1</li> <li>Precision Machining</li> <li>Pre-Engineering /Engineering Technology</li> <li>Technical Drafting</li> <li>Welding</li> </ul>
Science & Mathematics			
Pathway Assessment Options	Wyoming Developed Assessments	Business & Industry Certifications	NOCTI
	<ul style="list-style-type: none"> <li>NA</li> </ul>	<ul style="list-style-type: none"> <li>Cardiopulmonary Resuscitation (CPR) and First Aid</li> <li>Certified Nursing Assistant (CNA)</li> </ul>	<p><b>Job Ready Assessment</b></p> <ul style="list-style-type: none"> <li>Biotechnology</li> <li>Electric Power &amp; Distribution</li> <li>Electronics</li> </ul>



Note: This list is not exhaustive – it includes only those assessments that can be administered and reported for Perkins and State of Wyoming Accountability purposes (Post-Secondary Readiness). If you have a questions about any of the assessments on this list, please email Randall Butt at [randall.butt@wyo.gov](mailto:randall.butt@wyo.gov).

		<ul style="list-style-type: none"> <li>• Phlebotomy Technician Certification</li> </ul>	<ul style="list-style-type: none"> <li>• Electronics Technology</li> <li>• Industrial Electricity</li> <li>• Industrial Electronics</li> <li>• Mechatronics – Level 1</li> <li>• Small Animal Science &amp; Technology</li> </ul> <p><b>Pathway Assessment</b></p> <ul style="list-style-type: none"> <li>• Agricultural Biotechnology</li> </ul>
--	--	---	---



*Note: This list is not exhaustive – it includes only those assessments that can be administered and reported for Perkins and State of Wyoming Accountability purposes (Post-Secondary Readiness). If you have a questions about any of the assessments on this list, please email Randall Butt at [randall.butt@wyo.gov](mailto:randall.butt@wyo.gov).*

## Transportation, Distribution & Logistics

*Planning, management, and movement of people, materials, and goods by road, pipeline, air, rail and water and related professional support services such as transportation infrastructure planning and management, logistics services, mobile equipment and facility maintenance.*

Logistics Planning & Management Services			
Pathway Assessment Options	Wyoming Developed Assessments	Business & Industry Certifications	NOCTI
	<ul style="list-style-type: none"> <li>Marketing, Management &amp; Entrepreneurship - <b>NEW PILOT ASSESSMENTS (Spring 2018)</b></li> </ul>		<b>Job Ready Assessment</b> <ul style="list-style-type: none"> <li>Logistics Technology/Distribution Center Services</li> <li>21<sup>st</sup> Century Skills Assessment</li> </ul>
Facility & Mobile Equipment Maintenance			
Pathway Assessment Options	Wyoming Developed Assessments	Business & Industry Certifications	NOCTI
	<b>NEW PILOT ASSESSMENTS (Spring 2018)</b> <ul style="list-style-type: none"> <li>Manufacturing Welding</li> <li>Marketing, Management &amp; Entrepreneurship</li> </ul>	<ul style="list-style-type: none"> <li>AWS</li> <li>ASE Automobile Series</li> <li>Automatic Transmission/Transaxle</li> <li>Automobile Service Technology</li> <li>Brakes</li> <li>Electrical/Electronic Systems</li> <li>Engine Performance</li> <li>Engine Repair</li> <li>Heating &amp; Air Conditioning</li> <li>Maintenance &amp; Light Repair</li> <li>Manual Drive Train &amp; Axles</li> <li>Suspension &amp; Steering</li> <li>ASE Collision, Repair &amp; Refinish Series</li> <li>Mechanical &amp; Electrical</li> <li>Non-structural Analysis &amp; Damage Repair</li> </ul>	<b>Job Ready Assessment</b> <ul style="list-style-type: none"> <li>Diesel Technology</li> <li>Heavy Equipment Maintenance &amp; Repair</li> <li>Small Engine Technology</li> <li>Welding</li> </ul>



*Note: This list is not exhaustive – it includes only those assessments that can be administered and reported for Perkins and State of Wyoming Accountability purposes (Post-Secondary Readiness). If you have a questions about any of the assessments on this list, please email Randall Butt at [randall.butt@wyo.gov](mailto:randall.butt@wyo.gov).*

		<ul style="list-style-type: none"> <li>• Painting &amp; Refinishing</li> <li>• Structural Analysis &amp; Damage Repair</li> </ul> <p>ASE M/H Truck Series</p> <ul style="list-style-type: none"> <li>• Brake (M/H Truck)</li> <li>• Diesel Engines</li> <li>• Electrical/Electronic Systems (M/H Truck)</li> <li>• Steering &amp; Suspension (M/H Truck)</li> </ul>	
<b>Sales &amp; Service</b>			
<i>Pathway Assessment Options</i>	<b>Wyoming Developed Assessments</b>	<b>Business &amp; Industry Certifications</b>	<b>NOCTI</b>
	<ul style="list-style-type: none"> <li>• NA</li> </ul>	<p>ASE Automobile Series</p> <ul style="list-style-type: none"> <li>• Automatic Transmission/Transaxle</li> <li>• Automobile Service Technology</li> <li>• Brakes</li> <li>• Electrical/Electronic Systems</li> <li>• Engine Performance</li> <li>• Engine Repair</li> <li>• Heating &amp; Air Conditioning</li> <li>• Maintenance &amp; Light Repair</li> <li>• Manual Drive Train &amp; Axles</li> <li>• Suspension &amp; Steering</li> </ul> <p>ASE Collision, Repair &amp; Refinish Series</p> <ul style="list-style-type: none"> <li>• Mechanical &amp; Electrical</li> <li>• Non-structural Analysis &amp; Damage Repair</li> <li>• Painting &amp; Refinishing</li> <li>• Structural Analysis &amp; Damage Repair</li> </ul> <p>ASE M/H Truck Series</p> <ul style="list-style-type: none"> <li>• Brake (M/H Truck)</li> <li>• Diesel Engines</li> <li>• Electrical/Electronic Systems (M/H Truck)</li> </ul>	<p><b>Job Ready Assessment</b></p> <ul style="list-style-type: none"> <li>• 21<sup>st</sup> Century Skills Assessment</li> </ul>



*Note: This list is not exhaustive – it includes only those assessments that can be administered and reported for Perkins and State of Wyoming Accountability purposes (Post-Secondary Readiness). If you have a questions about any of the assessments on this list, please email Randall Butt at [randall.butt@wyo.gov](mailto:randall.butt@wyo.gov).*



		<ul style="list-style-type: none"> <li>Steering &amp; Suspension (M/H Truck)</li> </ul>	
	<b>Transportation Operations</b>		
<i>Pathway Assessment Options</i>	<b>Wyoming Developed Assessments</b>	<b>Business &amp; Industry Certifications</b>	<b>NOCTI</b>
	<ul style="list-style-type: none"> <li>NA</li> </ul>	<p>ASE Automobile Series</p> <ul style="list-style-type: none"> <li>Automatic Transmission/Transaxle</li> <li>Automobile Service Technology</li> <li>Brakes</li> <li>Electrical/Electronic Systems</li> <li>Engine Performance</li> <li>Engine Repair</li> <li>Heating &amp; Air Conditioning</li> <li>Maintenance &amp; Light Repair</li> <li>Manual Drive Train &amp; Axles</li> <li>Suspension &amp; Steering</li> </ul> <p>ASE Collision, Repair &amp; Refinish Series</p> <ul style="list-style-type: none"> <li>Mechanical &amp; Electrical</li> <li>Non-structural Analysis &amp; Damage Repair</li> <li>Painting &amp; Refinishing</li> <li>Structural Analysis &amp; Damage Repair</li> </ul> <p>ASE M/H Truck Series</p> <ul style="list-style-type: none"> <li>Brake (M/H Truck)</li> <li>Diesel Engines</li> <li>Electrical/Electronic Systems (M/H Truck)</li> <li>Steering &amp; Suspension (M/H Truck)</li> </ul> <p><b>NOCTI Business &amp; Industry Cert.</b></p> <ul style="list-style-type: none"> <li>Green Education Foundation Institute (GEFI) Sustainability 101</li> </ul>	<p><b>Job Ready Assessment</b></p> <ul style="list-style-type: none"> <li>21<sup>st</sup> Century Skills Assessment</li> </ul>
	<b>Transportation Systems/Infrastructure Planning, Management &amp; Regulation</b>		

Pathway Assessment Options	Wyoming Developed Assessments	Business & Industry Certifications	NOCTI
	<ul style="list-style-type: none"> <li>• NA</li> </ul>	<p>ASE Automobile Series</p> <ul style="list-style-type: none"> <li>• Automatic Transmission/Transaxle</li> <li>• Automobile Service Technology</li> <li>• Brakes</li> <li>• Electrical/Electronic Systems</li> <li>• Engine Performance</li> <li>• Engine Repair</li> <li>• Heating &amp; Air Conditioning</li> <li>• Maintenance &amp; Light Repair</li> <li>• Manual Drive Train &amp; Axles</li> <li>• Suspension &amp; Steering</li> </ul> <p>ASE Collision, Repair &amp; Refinish Series</p> <ul style="list-style-type: none"> <li>• Mechanical &amp; Electrical</li> <li>• Non-structural Analysis &amp; Damage Repair</li> <li>• Painting &amp; Refinishing</li> <li>• Structural Analysis &amp; Damage Repair</li> </ul> <p>ASE M/H Truck Series</p> <ul style="list-style-type: none"> <li>• Brake (M/H Truck)</li> <li>• Diesel Engines</li> <li>• Electrical/Electronic Systems (M/H Truck)</li> <li>• Steering &amp; Suspension (M/H Truck)</li> </ul>	<p><b>Job Ready Assessment</b></p> <ul style="list-style-type: none"> <li>• 21<sup>st</sup> Century Skills Assessment</li> </ul>